



**INDIAN SCHOOL MUSCAT
DEPARTMENT OF SCIENCE
MIDDLE SECTION**



SUBJECT: Science

Revision Worksheet No.5

TOPIC: **Light Shadows and Reflection.**

Std VI _____ Roll No. _____

Coordinating Staff: Suji Thomas

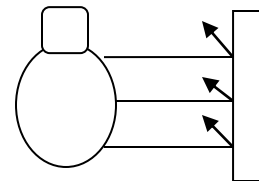
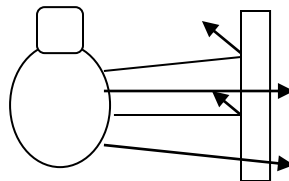
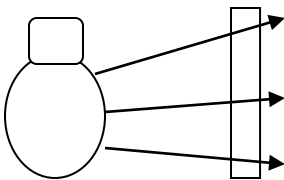
Date of issue:

Name: _____

Q1. How do we see things? In the given diagram draw the direction of the light ray to show how the boy can read his book?



Q2. Look at picture given below and classify the non luminous objects according to their ability to allow light to pass through them and define them in the boxes given in the picture.



Q3. Give two examples from nature where shadows are cast by the Earth and the Moon.

A3 _____

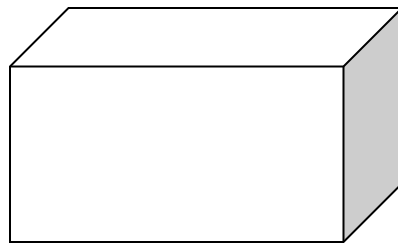
Q4. How are shadows formed? Write three conditions for a shadow to be formed.

A4. _____

Q5. What is the principle of the working of a pinhole camera?

A5. _____

Q6.



Draw the line image of the tree formed on the screen of the pinhole camera by drawing a ray of light from the top and bottom of the tree to the screen at the back of the camera.

Q7. What are the characteristics of the image formed by a pinhole camera?

A7. _____

Q7. What will be the size of the image if the object is placed

a. near the camera.

b. at a distance from the camera.
